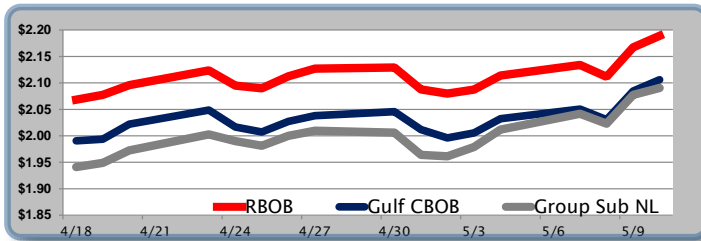


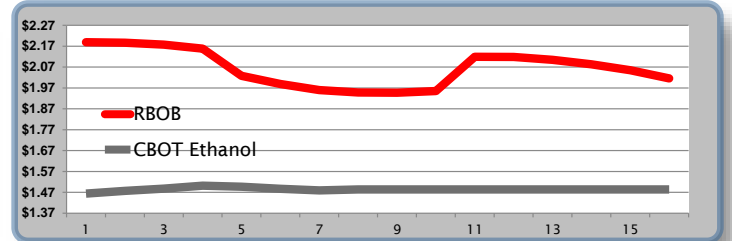
### Gasoline

	RBOB	Change	Gulf CBOB	Change	Group Sub NL	Change	Gulf Basis	Group Basis	RBOB Technicals		
5/11	\$2.1854	<b>-\$0.0036</b>	\$2.1024	<b>-\$0.0031</b>	\$2.0872	<b>-\$0.0033</b>	\$ (0.0835)	\$ (0.0985)	Indicator	Direction	Resistance
5/10	\$2.1890	<b>\$0.0217</b>	\$2.1060	<b>\$0.0215</b>	\$2.0905	<b>\$0.0130</b>	\$ (0.0830)	\$ (0.0985)	MACD	Topping	2.5010 Oct 2014 Peak
5/9	\$2.1673	<b>\$0.0559</b>	\$2.0845	<b>\$0.0539</b>	\$2.0775	<b>\$0.0547</b>	\$ (0.0828)	\$ (0.0898)	Stochastics	Bullish	2.1959 2018 High
5/8	\$2.1114	<b>-\$0.0226</b>	\$2.0306	<b>-\$0.0200</b>	\$2.0229	<b>-\$0.0189</b>	\$ (0.0808)	\$ (0.0886)	RSI	Bullish	2.0529 May Low
5/7	\$2.1340	<b>\$0.0200</b>	\$2.0506	<b>\$0.0183</b>	\$2.0417	<b>\$0.0300</b>	\$ (0.0834)	\$ (0.0923)	ADX	Neutral	1.9363 April Low
5/4	\$2.1140	<b>\$0.0265</b>	\$2.0323	<b>\$0.0269</b>	\$2.0117	<b>\$0.0327</b>	\$ (0.0817)	\$ (0.1023)	Momentum	Bullish	Support
5/3	\$2.0875	<b>\$0.0077</b>	\$2.0054	<b>\$0.0094</b>	\$1.9790	<b>\$0.0177</b>	\$ (0.0821)	\$ (0.1086)	Bias:	Bullish	
5/2	\$2.0798	<b>-\$0.0078</b>	\$1.9960	<b>-\$0.0159</b>	\$1.9613	<b>-\$0.0028</b>	\$ (0.0839)	\$ (0.1186)			

### Gasoline History



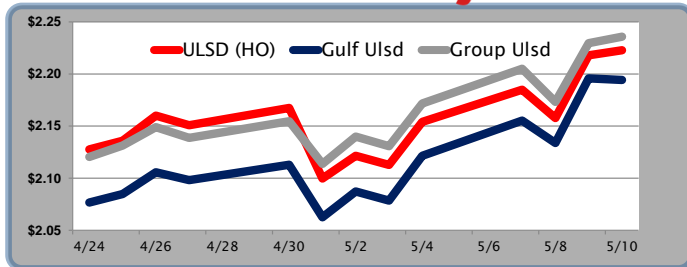
### Gasoline Futures Fwd Curve



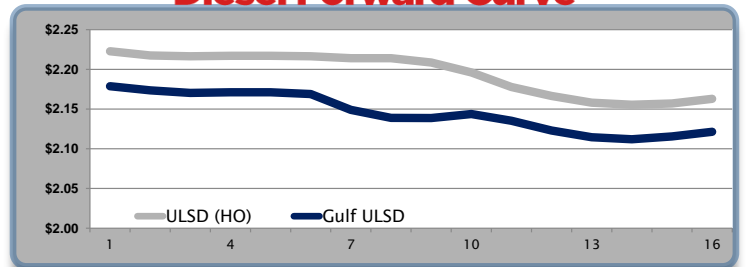
### Diesel

	ULSD (HO)	Change	Gulf Ulstd	Change	Group Ulstd	Change	Gulf Basis	Group Basis	HO Technicals		
5/11	\$2.2190	<b>-\$0.0038</b>	\$2.1906	<b>-\$0.0038</b>	\$2.2310	<b>-\$0.0048</b>	\$ (0.0289)	\$ 0.0118	Indicator	Direction	Resistance
5/10	\$2.2228	<b>\$0.0048</b>	\$2.1944	<b>-\$0.0115</b>	\$2.2358	<b>\$0.0062</b>	\$ (0.0284)	\$ 0.0130	MACD	Bullish	2.3514 Jan 2015 High
5/9	\$2.2180	<b>\$0.0603</b>	\$2.1958	<b>\$0.0621</b>	\$2.2297	<b>\$0.0564</b>	\$ (0.0222)	\$ 0.0116	Stochastics	Bullish	2.2339 2018 High
5/8	\$2.1577	<b>-\$0.0273</b>	\$2.1338	<b>-\$0.0216</b>	\$2.1732	<b>-\$0.0319</b>	\$ (0.0240)	\$ 0.0155	RSI	Bullish	2.091 May Low
5/7	\$2.1850	<b>\$0.0310</b>	\$2.1553	<b>\$0.0337</b>	\$2.2051	<b>\$0.0334</b>	\$ (0.0297)	\$ 0.0201	ADX	Neutral	2.046 March High
5/4	\$2.1540	<b>\$0.0413</b>	\$2.1216	<b>\$0.0431</b>	\$2.1717	<b>\$0.0410</b>	\$ (0.0324)	\$ 0.0177	Momentum	Bullish	Support
5/3	\$2.1127	<b>-\$0.0088</b>	\$2.0785	<b>-\$0.0088</b>	\$2.1307	<b>-\$0.0093</b>	\$ (0.0342)	\$ 0.0180	Bias:	Bullish	
5/2	\$2.1215	<b>\$0.0218</b>	\$2.0873	<b>\$0.0248</b>	\$2.1400	<b>\$0.0263</b>					

### Diesel History



### Diesel Forward Curve



### Crude

	WTI	Change	Brent	Change	Vs WTI				Vs Brent				Group / WCS
5/11	\$71.31	<b>-\$0.05</b>	\$77.26	<b>-\$0.21</b>	Gulf Gas	Gulf Diesel	3/2/1	5/3/2	Gulf Gas	Gulf Diesel	3/2/1	5/3/2	3/2/1
5/10	\$71.36	<b>\$0.22</b>	\$77.47	<b>\$0.26</b>	\$17.09	\$20.80	\$18.33	\$18.58	\$10.98	\$14.69	\$12.22	\$12.47	28.03
5/9	\$71.14	<b>\$2.08</b>	\$77.21	<b>\$2.36</b>	\$16.41	\$21.08	\$17.97	\$18.28	\$10.34	\$15.01	\$11.90	\$12.21	27.58
5/8	\$69.06	<b>-\$1.67</b>	\$74.85	<b>-\$1.32</b>	\$16.23	\$20.56	\$17.67	\$17.96	\$10.44	\$14.77	\$11.88	\$12.17	25.26
5/7	\$70.73	<b>\$1.01</b>	\$76.17	<b>\$1.30</b>	\$15.40	\$19.79	\$16.86	\$17.15	\$9.96	\$14.35	\$11.42	\$11.71	29.06
CPL Linespace	Line 1	Change	Line 2	Change									
	-0.0083	<b>\$0.0043</b>	-0.0063	<b>\$0.0013</b>									

### Refinery Margins

#### Economic Indicators

#### Commodity Futures

	Settle	Change	Settle	Change
S&P 500	2,719	<b>22.75</b>	Ethanol	1.465
DJIA	24,740	<b>196.99</b>	NatGas	2.737
Nasdaq	6,964	<b>70.33</b>	Gold	1,321
			Silver	16.68
EUR/USD	1.1928	<b>0.0013</b>	Copper	3.09
USD Index	92.52	<b>-0.11</b>	FCOJ	167.95
US 10 YR YIELD	2.97%	<b>-0.03</b>	Corn	394.75
US 2 YR YIELD	2.54%	<b>0.00</b>	Soy	1013.25
Oil Volatility Index	26.71	<b>-0.10</b>	Wheat	507.75
S&P Volatility Index (VIX)	13.42	<b>-0.19</b>	Ethanol RINS	0.3165
Nikkei 225 Index	22,520	<b>200.00</b>	Butane	0.996
			Propane	0.879

### Diesel Forward Curve

Indicative forward prices for ULSD at Gulf Coast area origin points. Prices are estimates only.

Del. Month	Price	Differential	3 Mo. Avg	6 Mo. Avg
Jun-18	\$2.1736	-\$0.0435		
Jul-18	\$2.1704	-\$0.0455		
Aug-18	\$2.1711	-\$0.0455	\$2.1717	
Sep-18	\$2.1711	-\$0.0455		
Oct-18	\$2.1689	-\$0.0470		
Nov-18	\$2.1491	-\$0.0645	\$2.1630	\$2.1674
Dec-18	\$2.1390	-\$0.0745		
Jan-19	\$2.1387	-\$0.0695		
Feb-19	\$2.1437	-\$0.0520	\$2.1405	
Mar-19	\$2.1353	-\$0.0420		
Apr-19	\$2.1230	-\$0.0430		
May-19	\$2.1146	-\$0.0430	\$2.1243	\$2.1324
<b>12 Month Avg</b>	<b>\$2.1499</b>	<b>-\$0.0513</b>		

\*SOURCES: Nymex, CBOT, NYSE, ICE, NASDAQ, CME Group, CBOE. Prices delayed.

Disclaimer: The information contained herein is derived from multiple sources believed to be reliable. However, this information is not guaranteed as to its accuracy or completeness. No responsibility is assumed for use of this material and no express or implied warranties or guarantees are made. This material and any view or comment expressed herein are provided for informational purposes only and should not be construed in any way as an inducement or recommendation to buy or sell products, commodity

# D6 Ethanol RINs

