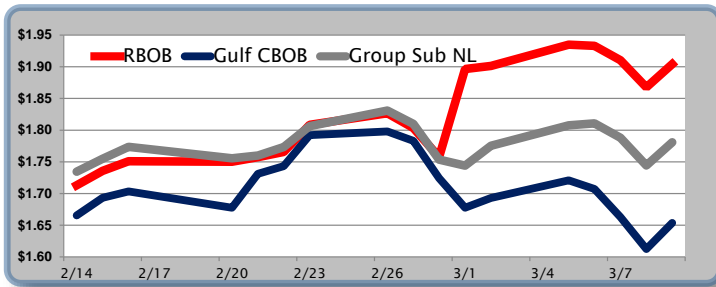


Gasoline

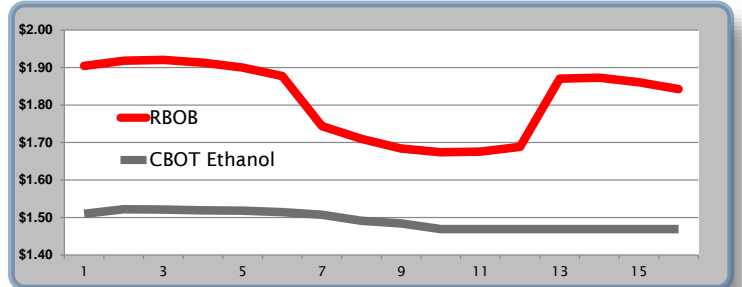
	RBOB	Change	Gulf CBOB	Change	Group Sub NL	Change	Gulf Basis	Group Basis	RBOB Technicals
3/12	\$1.8893	-\$0.0150	\$1.6386	-\$0.0145	\$1.7661	-\$0.0147	\$ (0.2513)	\$ (0.1236)	Indicator Direction
3/9	\$1.9043	\$0.0366	\$1.6536	\$0.0411	\$1.7808	\$0.0366	\$ (0.2508)	\$ (0.1236)	MACD Bullish
3/8	\$1.8677	-\$0.0426	\$1.6124	-\$0.0506	\$1.7442	-\$0.0439	\$ (0.2553)	\$ (0.1236)	Stochastics Topping
3/7	\$1.9103	-\$0.0228	\$1.6630	-\$0.0442	\$1.7880	-\$0.0228	\$ (0.2473)	\$ (0.1223)	RSI Neutral
3/6	\$1.9331	-\$0.0018	\$1.7072	-\$0.0135	\$1.8108	\$0.0032	\$ (0.2259)	\$ (0.1223)	ADX Neutral
3/5	\$1.9349	\$0.0335	\$1.7207	\$0.0277	\$1.8076	\$0.0322	\$ (0.2142)	\$ (0.1273)	Momentum Bullish
3/2	\$1.9014	\$0.0050	\$1.6931	\$0.0155	\$1.7754	\$0.0313	\$ (0.2084)	\$ (0.1261)	Bias: Neutral
3/1	\$1.8964	\$0.1387	\$1.6776	-\$0.0465	\$1.7441	-\$0.0094	\$ (0.2189)	\$ (0.1523)	

Resistance	2018 High	200 Day MA	2018 Low	Support
2.1705	Post Hurricane peak	1.9530	1.6862	1.6519
			200 Day MA	

Gasoline History



Gasoline Futures Fwd Curve

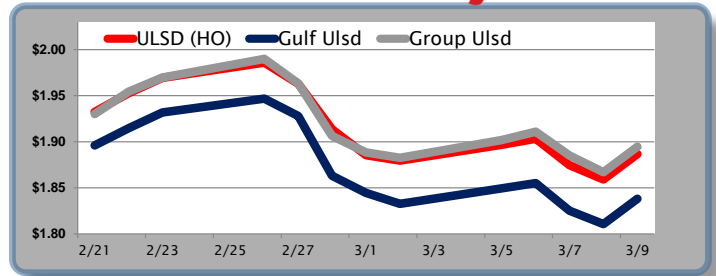


Diesel

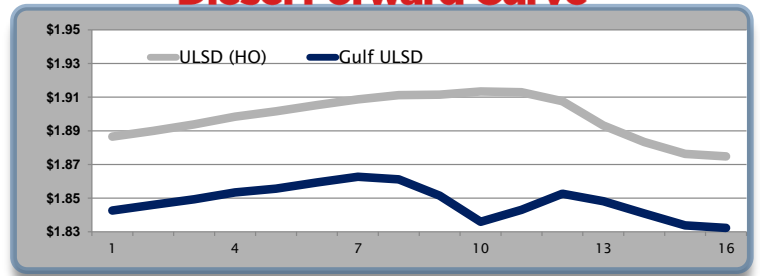
	ULSD (HO)	Change	Gulf Ulstd	Change	Group Ulstd	Change	Gulf Basis	Group Basis	HO Technicals
3/12	\$1.8650	-\$0.0216	\$1.8166	-\$0.0216	\$1.8720	-\$0.0226	\$ (0.0490)	\$ 0.0068	Indicator Direction
3/9	\$1.8866	\$0.0275	\$1.8382	\$0.0175	\$1.8946	\$0.0276	\$ (0.0485)	\$ 0.0080	MACD Neutral
3/8	\$1.8591	-\$0.0155	\$1.8107	-\$0.0145	\$1.8670	-\$0.0181	\$ (0.0485)	\$ 0.0079	Stochastics Neutral
3/7	\$1.8746	-\$0.0287	\$1.8252	-\$0.0299	\$1.8851	-\$0.0258	\$ (0.0495)	\$ 0.0105	RSI Neutral
3/6	\$1.9033	\$0.0066	\$1.8551	\$0.0056	\$1.9109	\$0.0090	\$ (0.0482)	\$ 0.0076	ADX Neutral
3/5	\$1.8967	\$0.0171	\$1.8495	\$0.0169	\$1.9019	\$0.0193	\$ (0.0472)	\$ 0.0052	Momentum Neutral
3/2	\$1.8796	-\$0.0059	\$1.8327	-\$0.0119	\$1.8826	-\$0.0059	\$ (0.0470)	\$ 0.0030	Bias: Neutral
3/1	\$1.8855	-\$0.0281	\$1.8446	-\$0.0185	\$1.8885	-\$0.0178			

Resistance	2018 High	March High	2018 Low	200 Day MA	Support
2.1431	1.912	1.8084	1.7415		

Diesel History



Diesel Forward Curve



Crude

	WTI	Change	Brent	Change	Gulf Gas	Gulf Diesel	3/2/1	5/3/2	Gulf Gas	Gulf Diesel	3/2/1	5/3/2	Group / WCS
3/12	\$61.52	-\$0.52	\$64.96	-\$0.53	\$7.41	\$15.16	\$9.99	\$10.51	\$3.96	\$11.71	\$6.54	\$7.06	38.72
3/9	\$62.04	\$1.92	\$65.49	\$1.88	\$7.60	\$15.93	\$10.38	\$10.93	\$4.11	\$12.44	\$6.89	\$7.44	37.31
3/8	\$60.12	-\$1.03	\$63.61	-\$0.73	\$8.70	\$15.51	\$10.97	\$11.42	\$5.51	\$12.32	\$7.78	\$8.23	38.79
3/7	\$61.15	-\$1.45	\$64.34	-\$1.45	\$9.10	\$15.31	\$11.17	\$11.59	\$5.91	\$12.12	\$7.98	\$8.40	37.25
3/6	\$62.60	\$0.03	\$65.79	\$0.25									
CPL Linespace	Line 1	Change	Line 2	Change									
	0.0268	-\$0.0008	-\$0.0051	-\$0.0020									

Refinery Margins

Diesel Forward Curve

Indicative forward prices for ULSD at Gulf Coast area origin points. Prices are estimates only.

Del. Month	Price	Differential	3 Mo. Avg	6 Mo. Avg
Apr-18	\$1.8460	-\$0.0435		
May-18	\$1.8493	-\$0.0440		
Jun-18	\$1.8534	-\$0.0445	\$1.8496	
Jul-18	\$1.8556	-\$0.0455		
Aug-18	\$1.8593	-\$0.0455		
Sep-18	\$1.8627	-\$0.0455	\$1.8592	\$1.8544
Oct-18	\$1.8612	-\$0.0495		
Nov-18	\$1.8515	-\$0.0595		
Dec-18	\$1.8359	-\$0.0770	\$1.8495	
Jan-19	\$1.8430	-\$0.0695		
Feb-19	\$1.8526	-\$0.0545		
Mar-19	\$1.8482	-\$0.0445	\$1.8479	\$1.8487
12 Month Avg	\$1.8516	-\$0.0519		

Economic Indicators

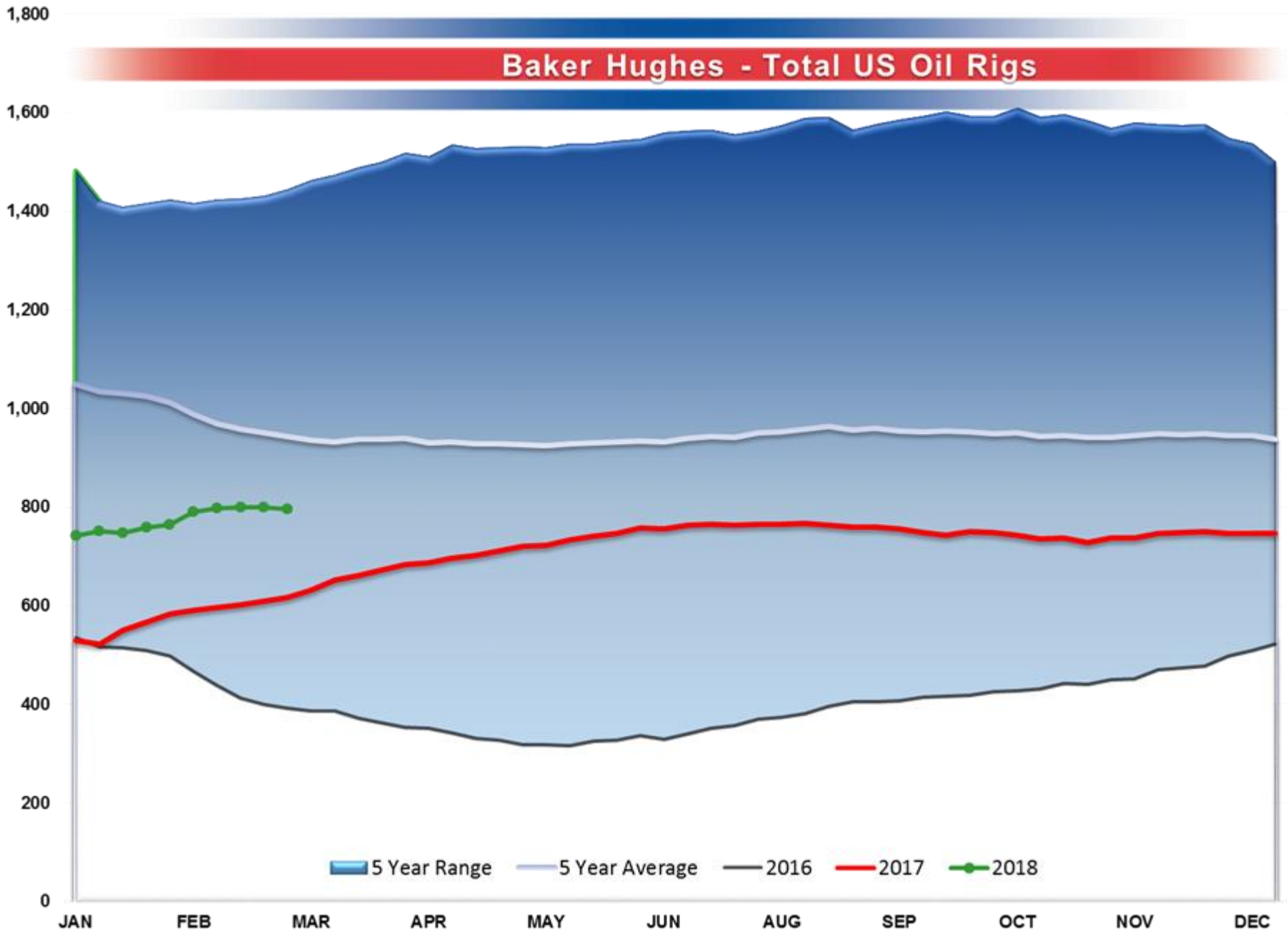
Commodity Futures

	Settle	Change		Settle	Change
S&P 500	2,784	44.75	Ethanol	1.508	
DJIA	25,336	440.53	NatGas	2.732	-0.024
Nasdaq	7,101	0.11	Gold	1,324	
Russell 2000	1,572	25.17	Silver	16.55	0.11
EUR/USD	1.2321	-0.0020	Copper	3.12	
USD Index	90.07	0.05	FCOJ	140.35	-0.45
US 10 Year Treasury	120.66	-0.03	Corn	383.00	-1.25
Oil Volatility Index	26.16	0.07	Soy	1029.25	-1.25
S&P Volatility Index (VIX)	16.54	-1.90	Wheat	489.00	-3.00
Nikkei 225 Index	21,760	-25.00	Ethanol RINS	0.4140	-0.053
German DAX Index	13,048	-189.50	Butane	0.911	0.024
			Propane	0.759	0.016

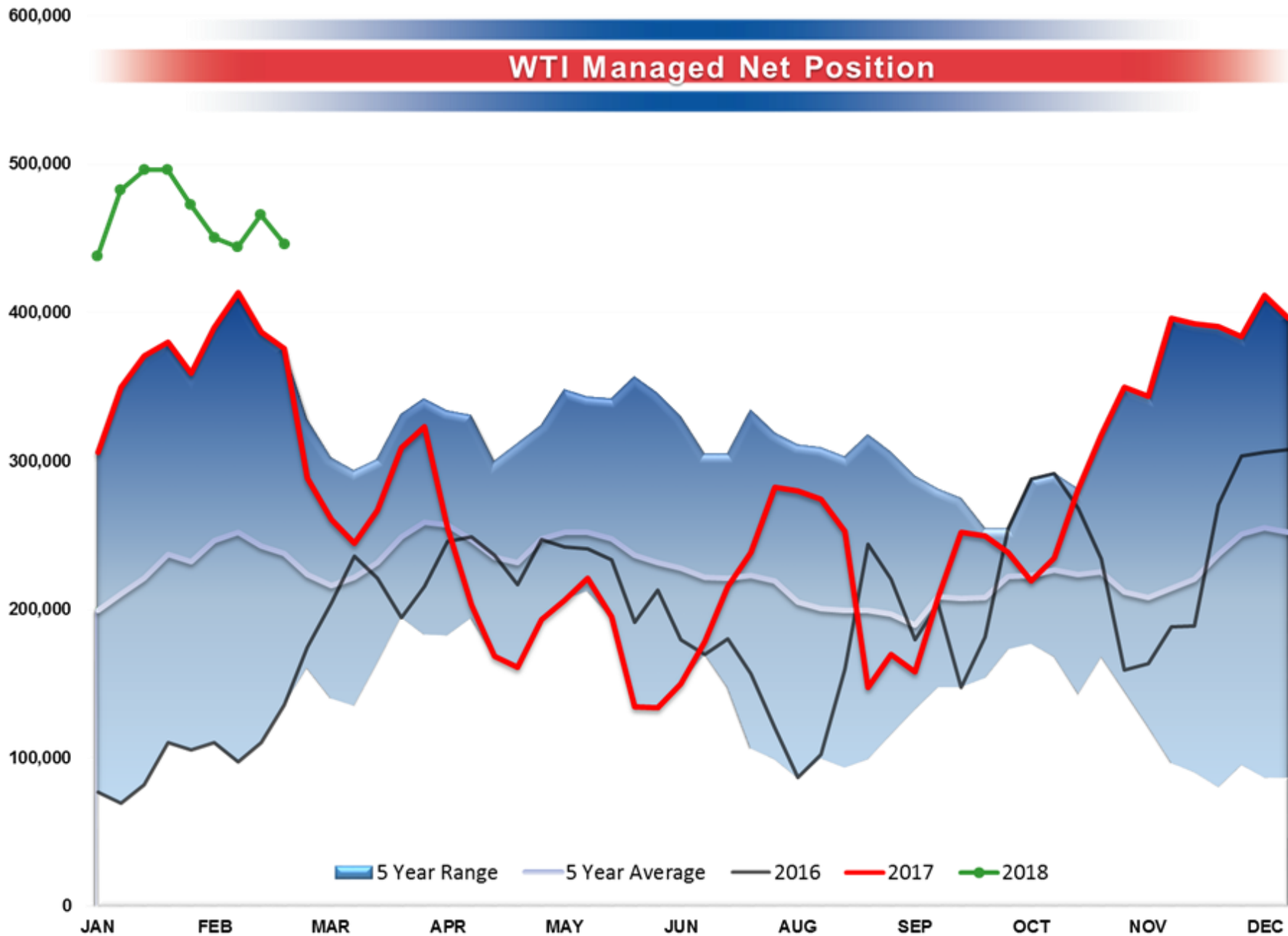
*SOURCES: Nymex, CBOT, NYSE, ICE, NASDAQ, CME Group, CBOE. Prices delayed.

Disclaimer: The information contained herein is derived from multiple sources believed to be reliable. However, this information is not guaranteed as to its accuracy or completeness. No responsibility is assumed for use of this material and no express or implied warranties or guarantees are made. This material and any view or comment expressed herein are provided for informational purposes only and should not be construed in any way as an inducement or recommendation to buy or sell products, commodity

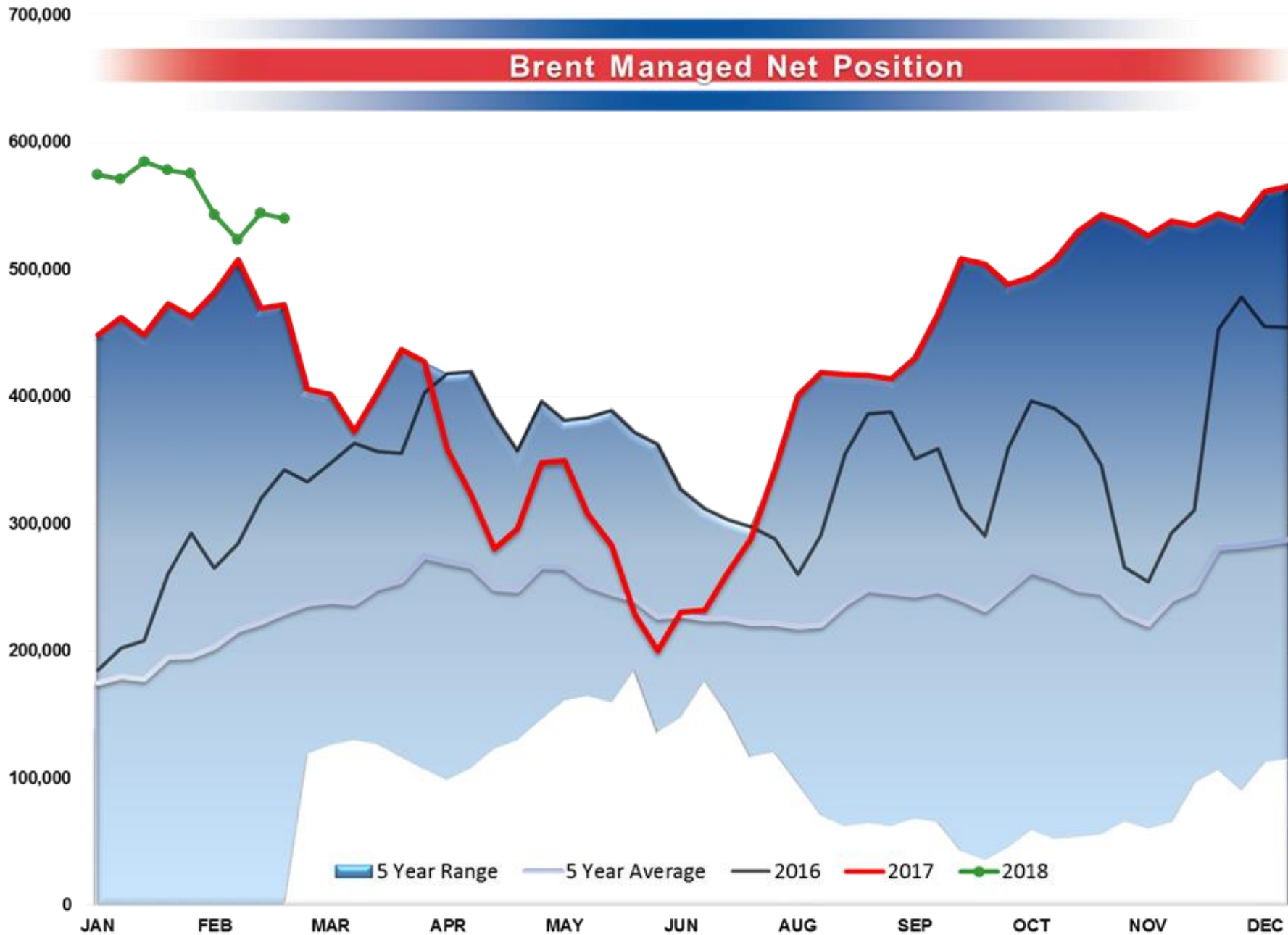
Baker Hughes - Total US Oil Rigs



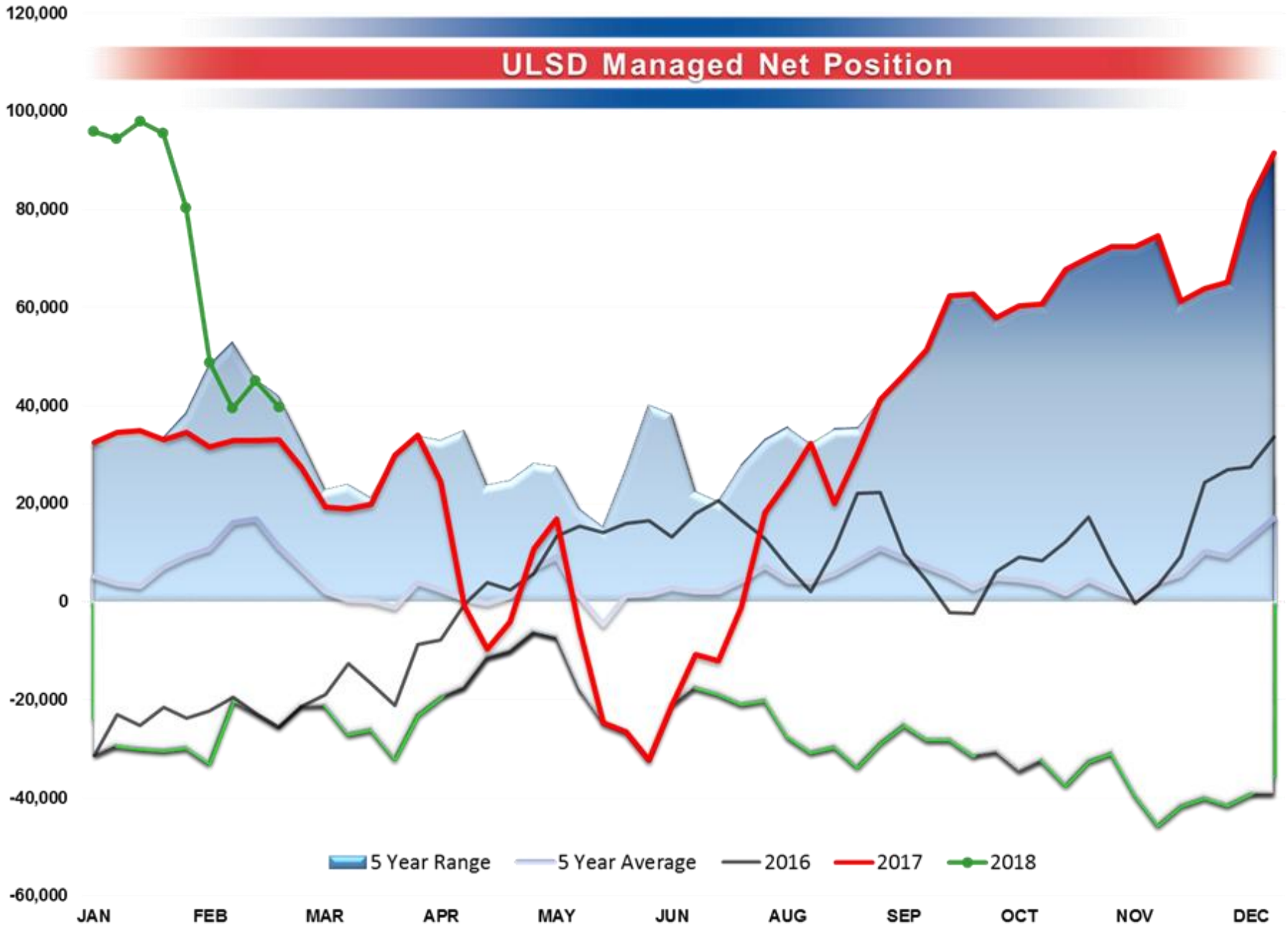
WTI Managed Net Position



Brent Managed Net Position



ULSD Managed Net Position



RBOB Managed Net Position

