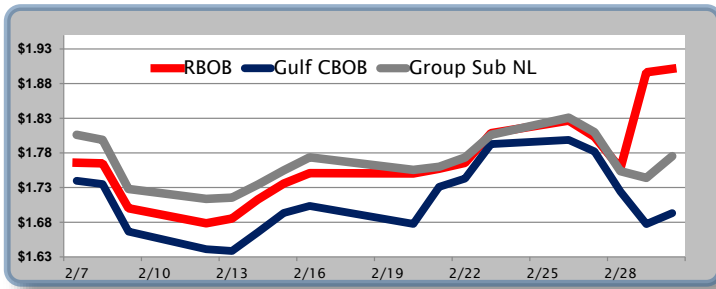


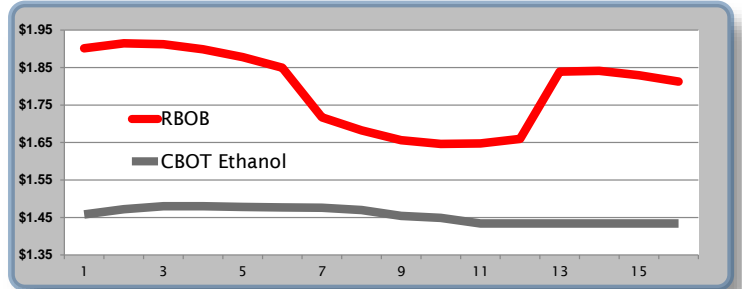
Gasoline

	RBOB	Change	Gulf CBOB	Change	Group Sub NL	Change	Gulf Basis	Group Basis	RBOB Technicals		
3/5	\$1.8875	-\$0.0139	\$1.6852	-\$0.0080	\$1.7669	-\$0.0085	\$ (0.2029)	\$ (0.1210)	Indicator	Direction	Resistance
3/2	\$1.9014	\$0.0050	\$1.6932	\$0.0158	\$1.7754	\$0.0313	\$ (0.2083)	\$ (0.1261)	MACD	Neutral	2.1705 Post Hurricane peak
3/1	\$1.8964	\$0.1387	\$1.6774	-\$0.0469	\$1.7441	-\$0.0094	\$ (0.2191)	\$ (0.1523)	Stochastics	Topping	1.9530 2018 High
2/28	\$1.7577	-\$0.0457	\$1.7243	-\$0.0579	\$1.7536	-\$0.0563	\$ (0.0334)	\$ (0.0042)	RSI	Neutral	1.6834 200 Day MA
2/27	\$1.8034	-\$0.0233	\$1.7822	-\$0.0166	\$1.8099	-\$0.0211	\$ (0.0212)	\$ (0.0065)	ADX	Neutral	1.6519 2018 Low
2/26	\$1.8267	\$0.0182	\$1.7988	\$0.0061	\$1.8309	\$0.0247	\$ (0.0280)	\$ (0.0042)	Momentum	Neutral	Support
2/23	\$1.8085	\$0.0428	\$1.7927	\$0.0495	\$1.8062	\$0.0328	\$ (0.0159)	\$ (0.0023)	Bias:	Neutral	
2/22	\$1.7657	\$0.0084	\$1.7431	\$0.0121	\$1.7734	\$0.0134	\$ (0.0226)	\$ (0.0077)			

Gasoline History



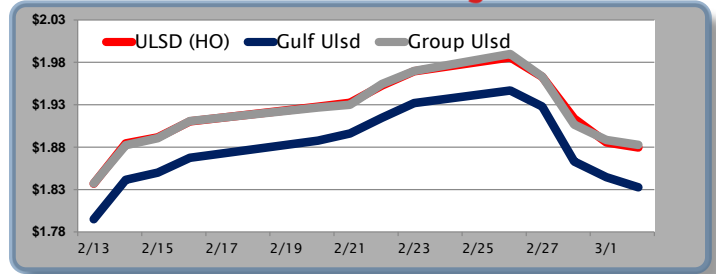
Gasoline Futures Fwd Curve



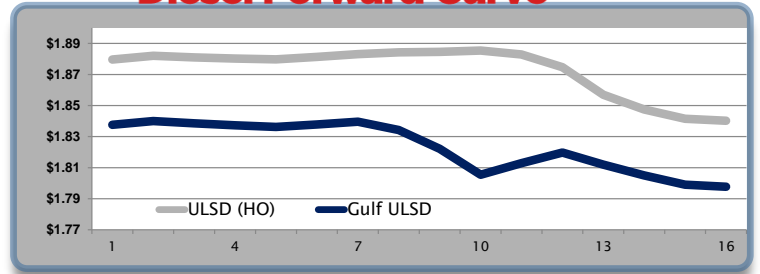
Diesel

	ULSD (HO)	Change	Gulf Ulstd	Change	Group Ulstd	Change	Gulf Basis	Group Basis	HO Technicals		
3/5	\$1.8617	-\$0.0179	\$1.8148	-\$0.0179	\$1.8637	-\$0.0189	\$ (0.0475)	\$ (0.0018)	Indicator	Direction	Resistance
3/2	\$1.8796	-\$0.0059	\$1.8327	-\$0.0219	\$1.8826	-\$0.0058	\$ (0.0470)	\$ (0.0030)	MACD	Bearish	2.3514 Feb 2015 High
3/1	\$1.8855	-\$0.0281	\$1.8446	-\$0.0185	\$1.8884	-\$0.0181	\$ (0.0410)	\$ (0.0029)	Stochastics	Bearish	2.1431 2018 High
2/28	\$1.9136	-\$0.0494	\$1.8631	-\$0.0650	\$1.9065	-\$0.0566	\$ (0.0506)	\$ (0.0071)	RSI	Bearish	1.8084 2018 Low
2/27	\$1.9630	-\$0.0229	\$1.9280	-\$0.0188	\$1.9631	-\$0.0267	\$ (0.0350)	\$ (0.0001)	ADX	Neutral	1.7415 200 Day MA
2/26	\$1.9859	\$0.0165	\$1.9468	\$0.0149	\$1.9899	\$0.0199	\$ (0.0391)	\$ (0.0039)	Momentum	Bearish	Support
2/23	\$1.9694	\$0.0167	\$1.9319	\$0.0173	\$1.9699	\$0.0155	\$ (0.0375)	\$ (0.0005)	Bias:	Bearish	
2/22	\$1.9527	\$0.0204	\$1.9147	\$0.0186	\$1.9545	\$0.0244					

Diesel History



Diesel Forward Curve



Crude

	WTI	Change	Brent	Change	Vs WTI				Vs Brent				Group / WCS
3/5	\$61.23	-\$0.02	\$64.25	-\$0.31	Gulf Gas	Gulf Diesel	3/2/1	5/3/2	Gulf Gas	Gulf Diesel	3/2/1	5/3/2	3/2/1
3/2	\$61.25	\$0.26	\$64.56	\$0.73	\$9.86	\$15.72	\$11.82	\$12.21	\$6.55	\$12.41	\$8.51	\$8.90	\$7.00
3/1	\$60.99	-\$0.65	\$63.83	-\$1.95	\$9.46	\$16.48	\$11.80	\$12.27	\$6.62	\$13.64	\$8.96	\$9.43	\$6.21
2/28	\$61.64	-\$1.37	\$65.78	-\$0.85	\$10.78	\$16.61	\$12.72	\$13.11	\$6.64	\$12.47	\$8.58	\$8.97	\$6.73
2/27	\$63.01	-\$0.90	\$66.63	-\$0.87	\$11.84	\$17.97	\$13.88	\$14.29	\$8.22	\$14.35	\$10.26	\$10.67	\$7.36
CPL Linespace	Line 1	Change	Line 2	Change									
	0.0030	-\$0.0033	-\$0.0113	\$0.0013									

Refinery Margins

Economic Indicators

Commodity Futures

	Settle	Change	Settle	Change
S&P 500	2,690	12.00	Ethanol	1.458
DJIA	24,538	-70.92	NatGas	2.695
Nasdaq	6,811	0.19	Gold	1,323
Russell 2000	1,507	25.78	Silver	16.39
EUR/USD	1.2266	0.0053	Copper	3.10
USD Index	89.91	0.13	FCOJ	138.10
US 10 Year Treasury	120.80	0.23	Corn	377.25
Oil Volatility Index	26.98	-0.83	Soy	1060.75
S&P Volatility Index (VIX)	22.47	-2.88	Wheat	492.00
Nikkei 225 Index	21,125	-65.00	Ethanol RINS	0.5040
German DAX Index	13,048	-189.50	Butane	0.884
			Propane	0.753

Diesel Forward Curve

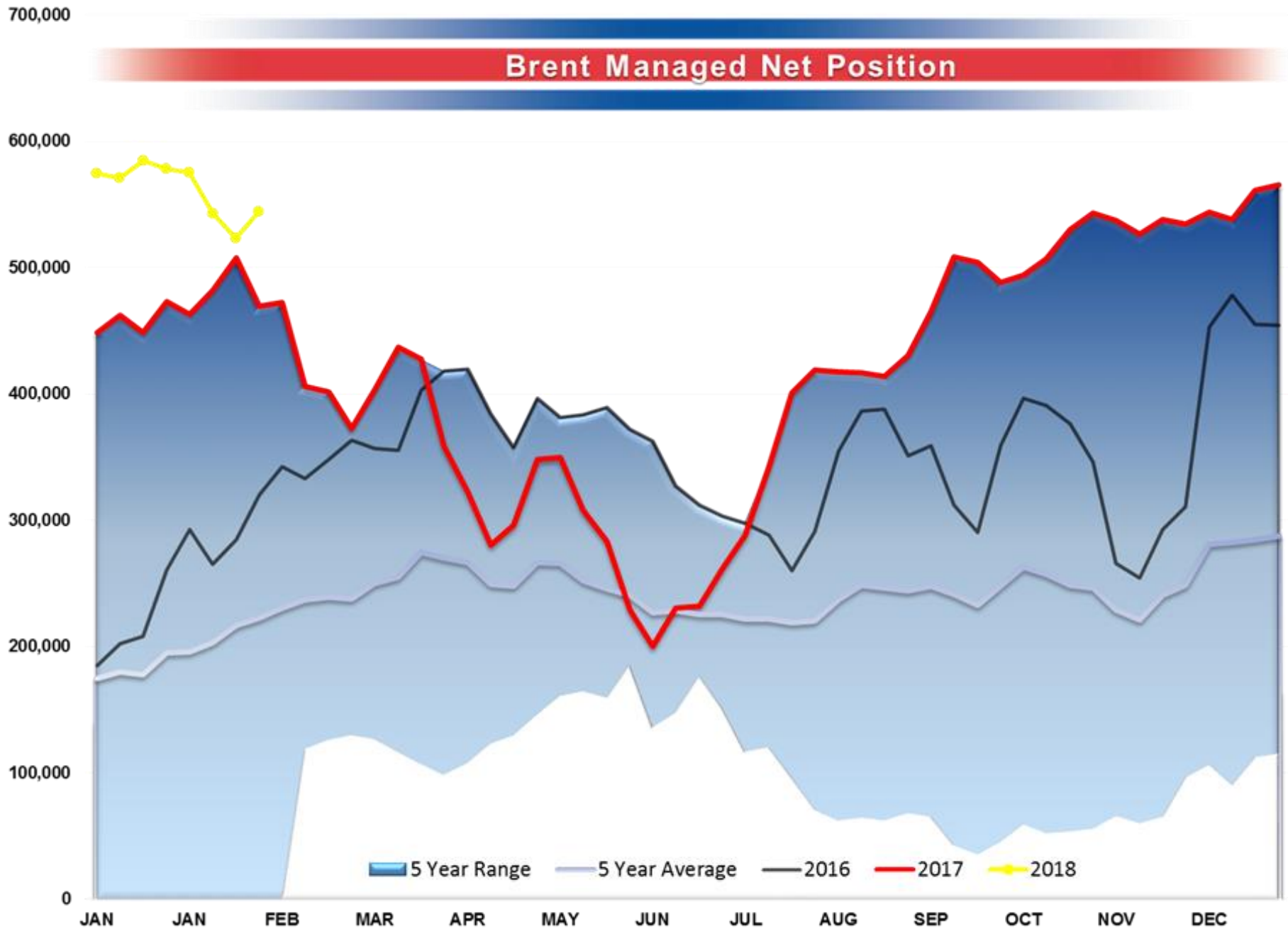
Indicative forward prices for ULSD at Gulf Coast area origin points. Prices are estimates only.

Del. Month	Price	Differential	3 Mo. Avg	6 Mo. Avg
Mar-18	\$1.8400	-\$0.0415		
Apr-18	\$1.8385	-\$0.0420		
May-18	\$1.8373	-\$0.0425	\$1.8386	
Jun-18	\$1.8362	-\$0.0430		
Jul-18	\$1.8378	-\$0.0430		
Aug-18	\$1.8396	-\$0.0430	\$1.8379	\$1.8382
Sep-18	\$1.8342	-\$0.0495		
Oct-18	\$1.8221	-\$0.0620		
Nov-18	\$1.8054	-\$0.0795	\$1.8206	
Dec-18	\$1.8129	-\$0.0695		
Jan-19	\$1.8197	-\$0.0545		
Feb-19	\$1.8119	-\$0.0445	\$1.8148	\$1.8177
12 Month Avg	\$1.8280	-\$0.0512		

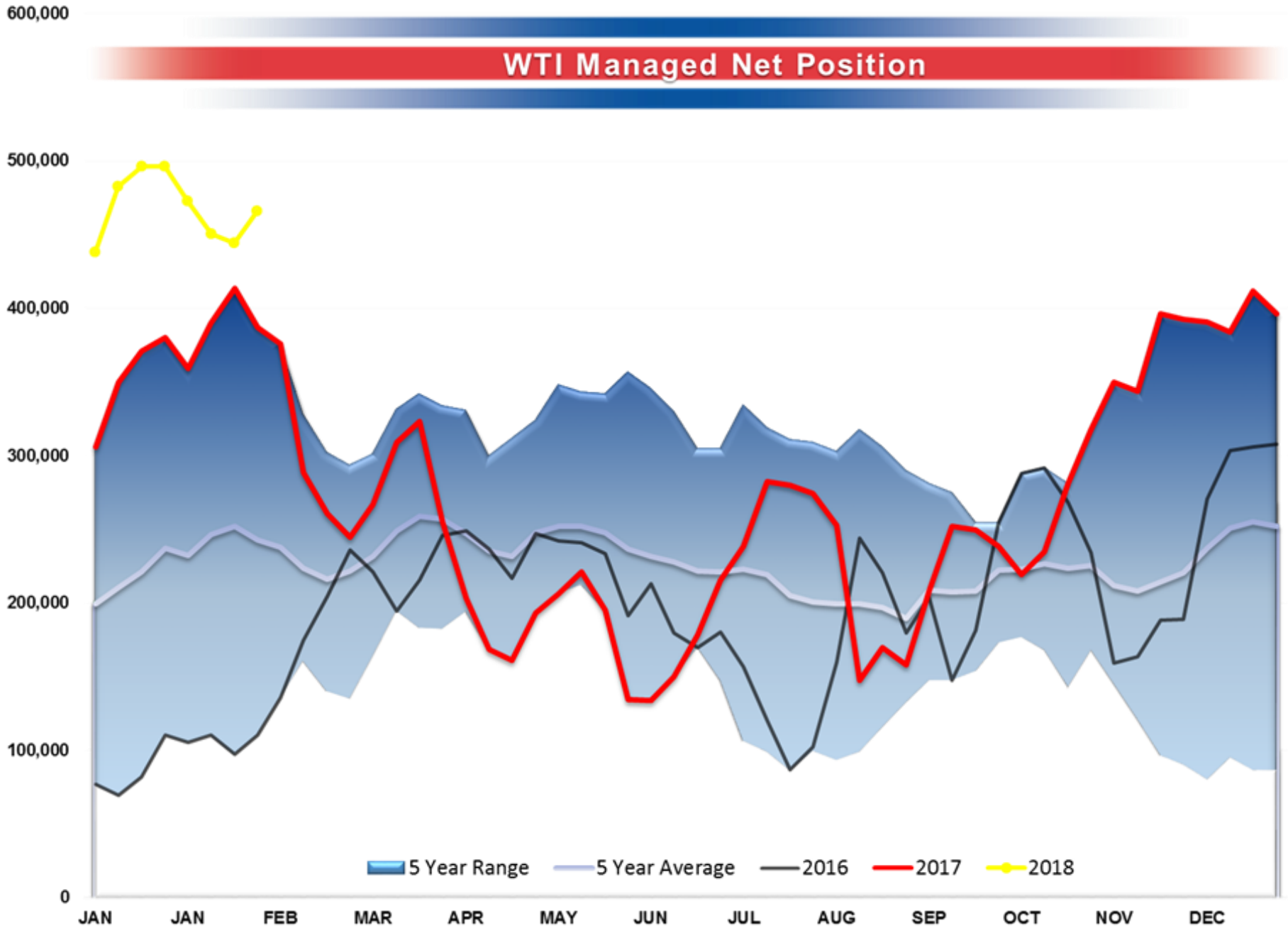
*SOURCES: Nymex, CBOT, NYSE, ICE, NASDAQ, CME Group, CBOE. Prices delayed.

Disclaimer: The information contained herein is derived from multiple sources believed to be reliable. However, this information is not guaranteed as to its accuracy or completeness. No responsibility is assumed for use of this material and no express or implied warranties or guarantees are made. This material and any view or comment expressed herein are provided for informational purposes only and should not be construed in any way as an inducement or recommendation to buy or sell products, commodity

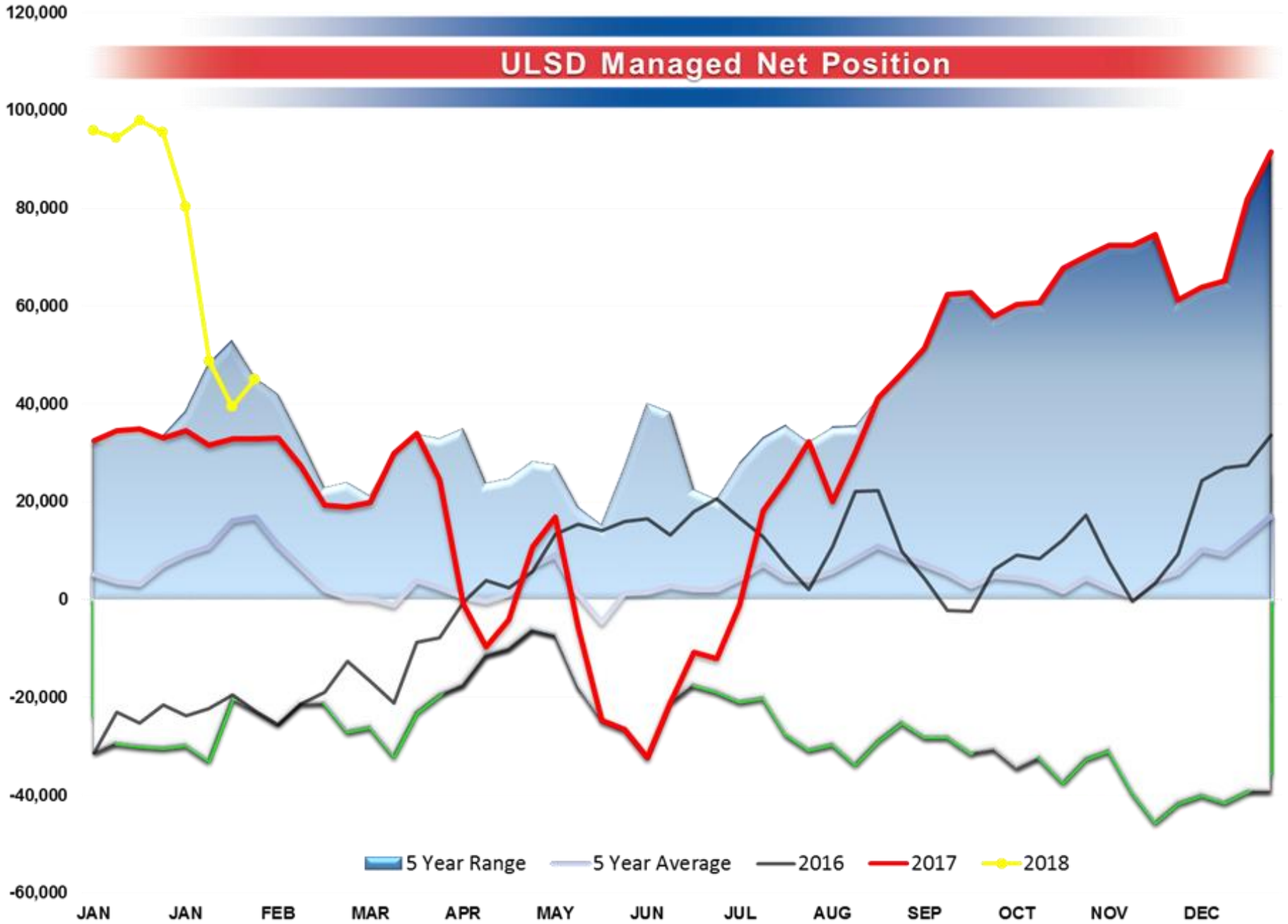
Brent Managed Net Position



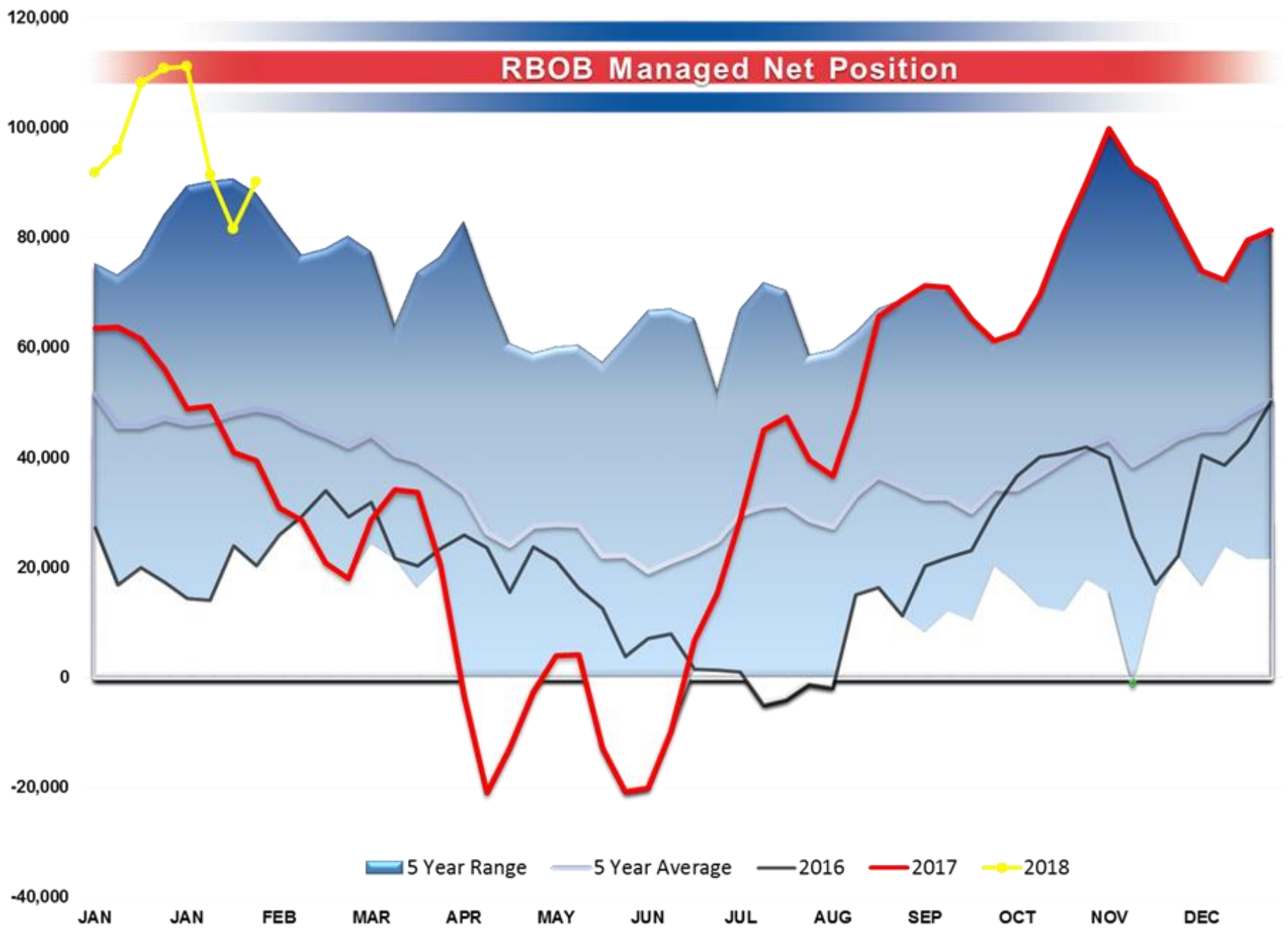
WTI Managed Net Position



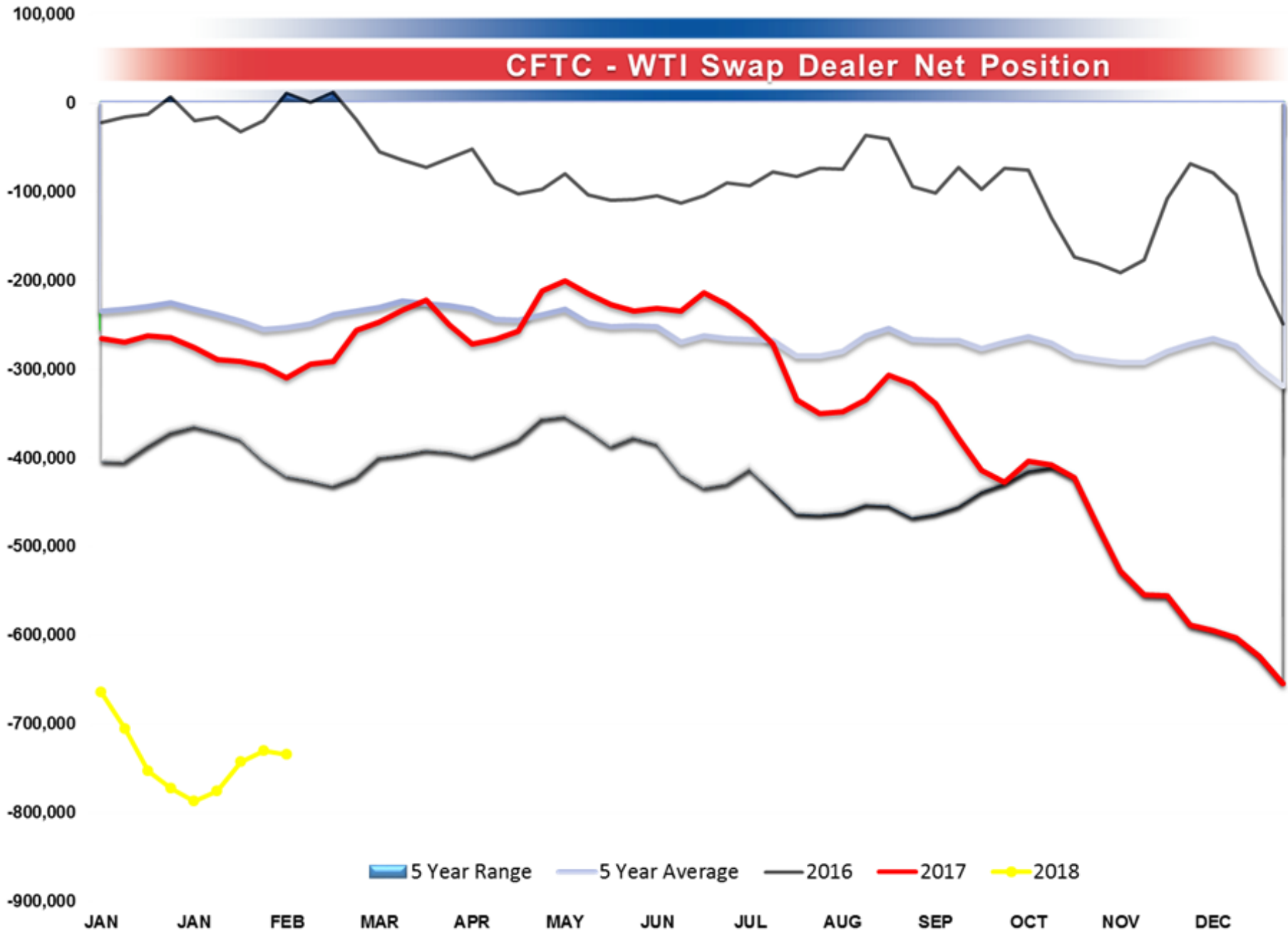
ULSD Managed Net Position



RBOB Managed Net Position



CFTC - WTI Swap Dealer Net Position



Baker Hughes - Total US Oil Rigs

