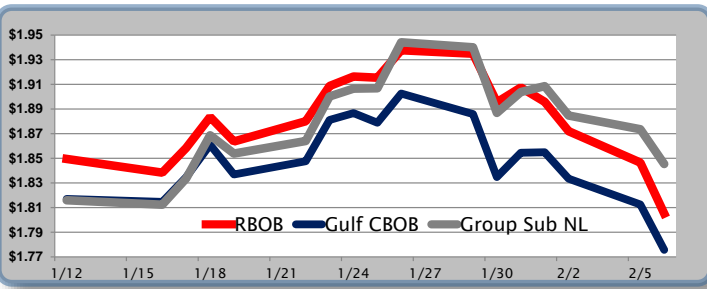


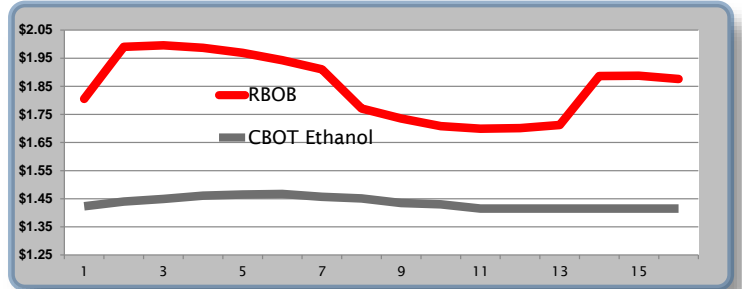
Gasoline

	RBOB	Change	Gulf CBOB	Change	Group Sub NL	Change	Gulf Basis	Group Basis	RBOB Technicals		
2/7	\$1.8100	\$0.0048	\$1.7805	\$0.0048	\$1.8492	\$0.0038	\$ (0.0300)	\$ 0.0389	Indicator	Direction	Resistance
2/6	\$1.8052	-\$0.0414	\$1.7757	-\$0.0369	\$1.8454	-\$0.0282	\$ (0.0295)	\$ 0.0402	MACD	Topping	2.1705 Post Hurricane peak
2/5	\$1.8466	-\$0.0254	\$1.8126	-\$0.0209	\$1.8736	-\$0.0112	\$ (0.0340)	\$ 0.0270	Stochastics	Bearish	1.9510 2018 High
2/2	\$1.8720	-\$0.0238	\$1.8335	-\$0.0215	\$1.8847	-\$0.0238	\$ (0.0386)	\$ 0.0127	RSI	Bearish	1.6622 200 Day MA
2/1	\$1.8958	-\$0.0117	\$1.8549	\$0.0004	\$1.9085	\$0.0048	\$ (0.0409)	\$ 0.0127	ADX	Topping	1.6438 December Low
1/31	\$1.9075	\$0.0121	\$1.8545	\$0.0196	\$1.9038	\$0.0169	\$ (0.0530)	\$ (0.0037)	Momentum	Bearish	Support
1/30	\$1.8954	-\$0.0395	\$1.8349	-\$0.0511	\$1.8869	-\$0.0533	\$ (0.0606)	\$ (0.0086)	Bias:	Bearish	
1/29	\$1.9349	-\$0.0028	\$1.8859	-\$0.0167	\$1.9401	-\$0.0041	\$ (0.0490)	\$ 0.0052			

Gasoline History



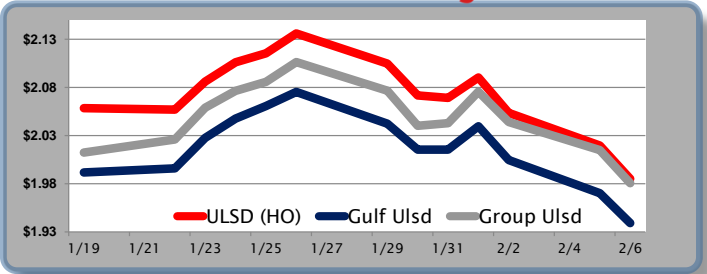
Gasoline Futures Fwd Curve



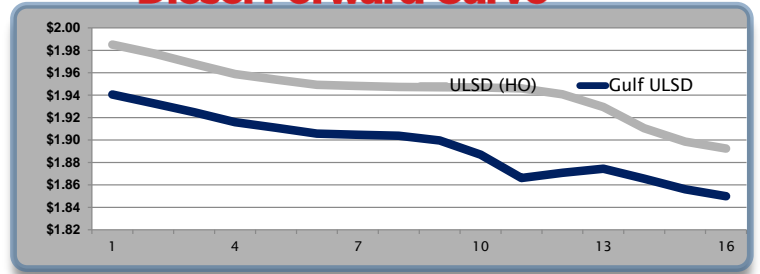
Diesel

	ULSD (HO)	Change	Gulf Ulstd	Change	Group Ulstd	Change	Gulf Basis	Group Basis	HO Technicals		
2/7	\$1.9738	-\$0.0113	\$1.9279	-\$0.0113	\$1.9683	-\$0.0123	\$ (0.0465)	\$ (0.0057)	Indicator	Direction	Resistance
2/6	\$1.9851	-\$0.0345	\$1.9392	-\$0.0410	\$1.9806	-\$0.0344	\$ (0.0460)	\$ (0.0045)	MACD	Topping	2.3514 Feb 2015 High
2/5	\$2.0196	-\$0.0339	\$1.9702	-\$0.0344	\$2.0150	-\$0.0290	\$ (0.0495)	\$ (0.0046)	Stochastics	Bearish	2.1431 2018 High
2/2	\$2.0535	-\$0.0369	\$2.0046	-\$0.0352	\$2.0440	-\$0.0315	\$ (0.0490)	\$ (0.0095)	RSI	Bearish	2.0077 50 Day MA
2/1	\$2.0904	\$0.0212	\$2.0397	\$0.0242	\$2.0755	\$0.0326	\$ (0.0507)	\$ (0.0149)	ADX	Neutral	1.8597 Dec Low
1/31	\$2.0692	-\$0.0025	\$2.0155	\$0.0001	\$2.0430	\$0.0028	\$ (0.0537)	\$ (0.0263)	Momentum	Bearish	Support
1/30	\$2.0717	-\$0.0331	\$2.0154	-\$0.0270	\$2.0401	-\$0.0364	\$ (0.0563)	\$ (0.0316)	Bias:	Bearish	
1/29	\$2.1048	-\$0.0312	\$2.0424	-\$0.0330	\$2.0766	-\$0.0297					

Diesel History



Diesel Forward Curve



Crude

	WTI	Change	Brent	Change	Vs WTI				Vs Brent				Group / WCS
2/7	\$63.13	-\$0.26	\$66.75	-\$0.11	Gulf Gas	Gulf Diesel	3/2/1	5/3/2	Gulf Gas	Gulf Diesel	3/2/1	5/3/2	3/2/1
2/6	\$63.39	-\$0.76	\$66.86	-\$0.76	\$11.19	\$18.05	\$13.48	\$13.94	\$7.72	\$14.58	\$10.01	\$10.47	42.16
2/5	\$64.15	-\$1.30	\$67.62	-\$0.96	\$11.98	\$18.60	\$14.18	\$14.62	\$8.51	\$15.13	\$10.71	\$11.15	43.43
2/2	\$65.45	\$0.72	\$68.58	-\$1.07	\$11.55	\$18.74	\$13.95	\$14.43	\$8.42	\$15.61	\$10.82	\$11.30	43.46
1/31	\$64.73	\$0.23	\$69.65	\$0.60	\$13.18	\$20.94	\$15.76	\$16.28	\$8.26	\$16.02	\$10.84	\$11.36	43.81
CPL Linespace	Line 1	Change	Line 2	Change									
	-0.0080	-\$0.0005	-\$0.0001	-\$0.0030									

Refinery Margins

Economic Indicators

Commodity Futures

	Settle	Change	Settle	Change
S&P 500	2,694	63.25	Ethanol	1.430
DJIA	24,913	567.77	NatGas	2.759
Nasdaq	6,666	-0.09	Gold	1,326
Russell 2000	1,491	16.08	Silver	16.55
EUR/USD	1.2403	-0.0054	Copper	3.18
USD Index	89.45	0.32	FCOJ	146.30
US 10 Year Treasury	121.48	-0.03	Corn	363.50
Oil Volatility Index	25.91	0.68	Soy	986.25
S&P Volatility Index (VIX)	37.32	-7.34	Wheat	446.25
Nikkei 225 Index	22,270	-380.00	Ethanol RINS	0.6265
German DAX Index	13,048	-189.50	Butane	0.905
			Propane	0.778

Diesel Forward Curve

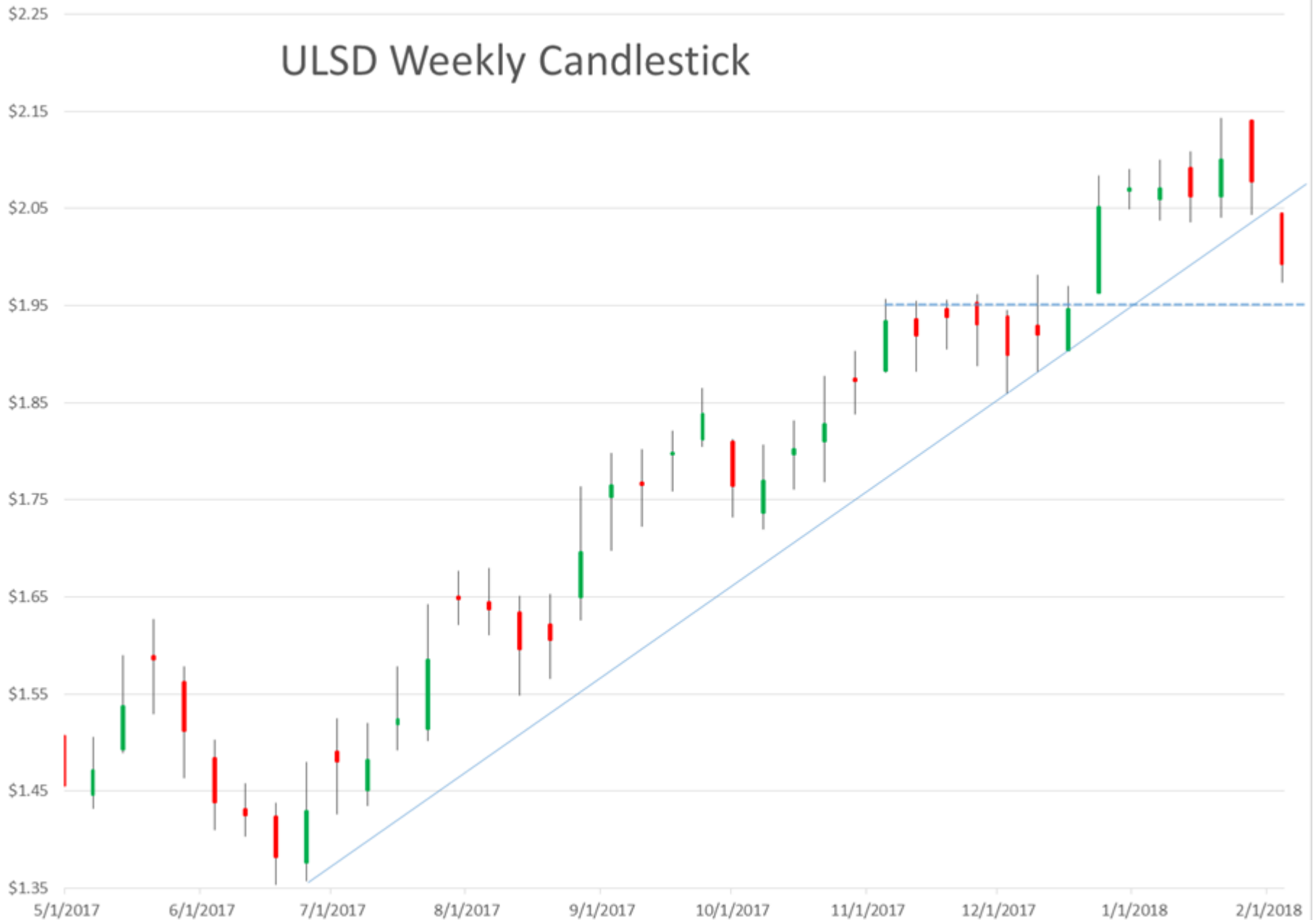
Indicative forward prices for ULSD at Gulf Coast area origin points. Prices are estimates only.

Del. Month	Price	Differential	3 Mo. Avg	6 Mo. Avg
Mar-18	\$1.9328	-\$0.0440		
Apr-18	\$1.9248	-\$0.0425		
May-18	\$1.9159	-\$0.0425	\$1.9245	
Jun-18	\$1.9109	-\$0.0425		
Jul-18	\$1.9057	-\$0.0430		
Aug-18	\$1.9047	-\$0.0430	\$1.9071	\$1.9158
Sep-18	\$1.9038	-\$0.0430		
Oct-18	\$1.8996	-\$0.0470		
Nov-18	\$1.8869	-\$0.0595	\$1.8968	
Dec-18	\$1.8661	-\$0.0795		
Jan-19	\$1.8708	-\$0.0695		
Feb-19	\$1.8745	-\$0.0545	\$1.8705	\$1.8836
12 Month Avg	\$1.8997	-\$0.0509		

*SOURCES: Nymex, CBOT, NYSE, ICE, NASDAQ, CME Group, CBOE. Prices delayed.

Disclaimer: The information contained herein is derived from multiple sources believed to be reliable. However, this information is not guaranteed as to its accuracy or completeness. No responsibility is assumed for use of this material and no express or implied warranties or guarantees are made. This material and any view or comment expressed herein are provided for informational purposes only and should not be construed in any way as an inducement or recommendation to buy or sell products, commodity

ULSD Weekly Candlestick



DJIA
Daily Trading Range

